

SMART-QC

Testing Power Converters



Testing made Organised, Reliable, Simpler & Faster

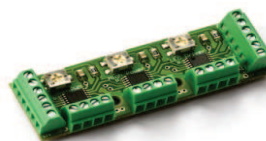
Key Features

- DSP Based True RMS Technology
- Accuracy class 0.2
- PC Interfacing with report generation
- PASS/FAIL Facility
- CT ratio & Shunt Setting facility
- Simultaneous Display

Smart Instrument for Testing Electrical Appliances



UPS



LED Driver



Mobile Charger



Ballast



SMPS



Toroidal transformer

Smart Solution Makes you **SMARTER**

Technical Specification

A) Input Voltage	3-500 V AC / 1-300V DC
B) Input Current	1-500mA /10mA-2A /5A /10A /20A AC 10mA-2A / 5A / 10A / 15A DC*
C) Measurement	True RMS
D) Resolution	Floating Decimal Point
E) Accuracy	Class 0.2 and for P.F. \pm 0.005
F) Display	Four Rows 7- Segment Display
G) Aux. supply	230V \pm 20%
H) Dimension(mm)	Front 130 by 280. Depth 210
I) Communication	A) USB B) RS485(Optional)
j) Range	AC Voltage : 05- 500V AC. Current : 500mA-2A,5A AC. DC Voltage : 3-200V DC Current : 2A,5A,10A,20A DC.
k) Parameters	AC - Voltage, Current, Wattage Power Factor, Apparent Power & Frequency DC - Voltage, Current, Wattage & Efficiency

PASS/FAIL FACILITY



Fig.1

User can set alert limit for five different type of model for and AC - Wattage, Current & Power Factor, DC - Voltage, Current & Wattage and Efficiency.

Standard Accessories



POWER CABLE



USB CABLE



Clamp on CT (Optional)



MANUAL



SOFTWARE CD



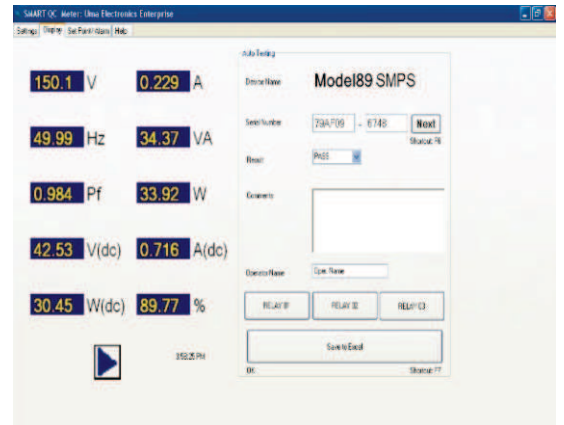
PATCH CORDS

Related Products

DTM-1
(AC+THD+DC+EFF.)



COMPUTER INTERFACING



Features :

- Report Generation
- Data Logger
- Online Graphing
- Real Time View

EXCEL & PDF REPORT

Report in PDF Format

Test Report					
A) Product Name: Star Series LED Driver					
B) Product Serial No.: Star/EE/067					
C) Product Batch No.: Star/EE/1A					
D) Result: PASS					
E) Operator Name: Parmest					
F) Date & Time : 17 July 2017 09:30:45AM					
G) Test Report No.: Report/Feb/067					
	V	A	W	PF	Hz
CH1 (AC)	241.9	0.126	29.26	0.960	49.98
CH2 (DC)	54.0	0.412	22.24	-	-
Efficiency :76.00% (Wdc/ Wac)					
Tested by					
Instrument & software developed by EMBUILT TECHNOLOGIES www.embuilt.com					

Report in Excel Format

DATE	TIME	Voltage	Current	Power Factor	Wattage	Frequency	Apparent Power
6/5/2013	5:31:37 PM	230.1	1.089	0.999	250.328	49.97	250.578
6/5/2013	5:31:38 PM	229.9	1.073	0.999	246.434	49.98	246.682
6/5/2013	5:31:39 PM	230	1.09	0.998	250.198	49.98	250.7
6/5/2013	5:31:40 PM	230.2	1.072	0.999	246.527	49.98	246.774
6/5/2013	5:31:41 PM	230.1	1.069	0.999	245.730	49.98	245.976
6/5/2013	5:31:42 PM	230.1	1.065	0.999	244.8114	49.98	245.056
6/5/2013	5:31:43 PM	230	1.073	0.997	246.049	50	246.79
6/5/2013	5:31:44 PM	229.9	1.07	0.997	245.255	50.01	245.993
6/5/2013	5:31:45 PM	229.8	1.068	0.998	244.935	50.01	245.426
6/5/2013	5:31:46 PM	229.9	1.073	0.999	246.434	50	246.682
6/5/2013	5:31:47 PM	230.2	1.072	0.998	246.289	50.01	246.774
6/5/2013	5:31:48 PM	230.5	1.093	0.998	251.432	49.98	251.936
6/5/2013	5:32:01 PM	230.8	1.098	0.999	253.169	49.98	253.418
6/5/2013	5:32:02 PM	230.2	1.072	0.999	246.527	49.98	246.774
6/5/2013	5:32:03 PM	230.4	1.091	0.999	251.115	49.98	251.366
6/5/2013	5:32:04 PM	230.6	1.095	0.999	252.254	49.98	252.507
6/5/2013	5:32:05 PM	231.1	1.1	1	254.21	50	254.23
6/5/2013	5:32:06 PM	230.5	1.093	0.998	251.432	49.88	251.936

Developed & Manufactured By :



EMBUILT
TECHNOLOGIES

EMBUILT TECHNOLOGIES

Office:
A-404, Vaishali Nagar,
Jaipur-302021, Rajasthan, INDIA
Tel. +91-141-2240935 Mob.: +91-7524853539
E-mail info@embuilt.com
Website : <http://www.embuilt.com>

Factory :
H-54, Bindayaka,
RIICO Industrial Area,
Jaipur-302012