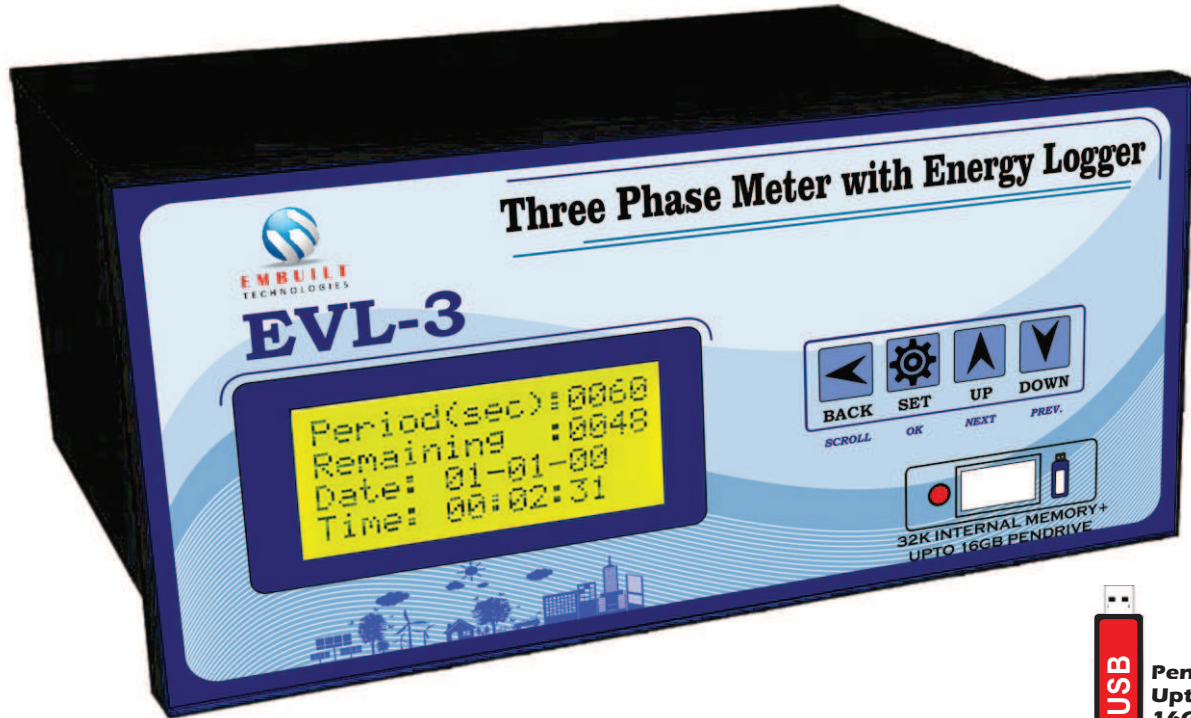




EMBUILT
TECHNOLOGIES

EVL-3

Three Phase Meter with Energy Logger



FEATURES



Pen-Drive data logging up-to 16GB



Measurement of All Electrical parameters



Internal Data Storage up-to 32000 Tests



Configurable CT/PT Ratio



Class 0.2 accuracy metering



Automatic Data Logging



Operator easily set data logging time period



**Measuring Parameters
Volt, Amp, Watt, F, PF, KWh, KVAh**



Round the clock logging
on Pen drive with real time clock



MEASURING PARAMETERS

All Electrical Parameters:

Parameter	R	Y	B	Avg/Total
Voltage (phase- N)	✓	✓	✓	A
Current	✓	✓	✓	T
Wattage	✓	✓	✓	T
PF	✓	✓	✓	A
KWh	✓	✓	✓	T
KVAh	✓	✓	✓	T
KVARh	-	-	-	T
Frequency	Any phase with voltage and current			

TECHNICAL SPECIFICATION

Measurement range (can be extend by using CT/PT)	Voltage : 20 - 500 V
	30-600 V (phase to phase)
Auxiliary power	180 - 250 V
Accuracy	Class 0.2

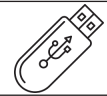


ACCESSORIES

Manual



8GB Pen drive



Screwing clamps



Compatible with CLAMP-ON CTs

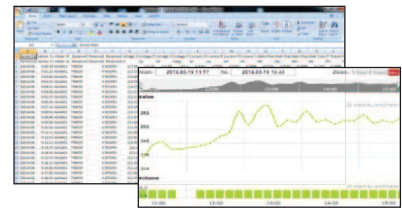
Compatible with Clamp-on CTs
(RISH clamp 1000A~)



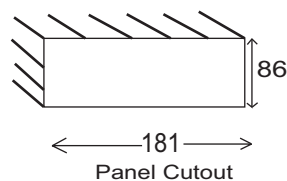
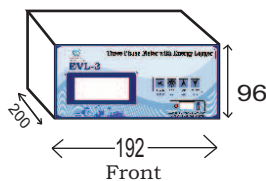
CSV Files

Save data
in CSV files

Openable with
MS-Excel



DIMENSION



* Dimensions in mm

Developed & Manufactured By :

EMBUILT TECHNOLOGIES

A-404, Vaishali Nagar, Near Nursery Circle
Jaipur, Rajasthan
INDIA-302021

Tel. : +91-141-2240935

Mob. : +91-7524853539

E-mail : info@embuilt.com

Website : <http://www.embuilt.com>



EMBUILT
TECHNOLOGIES